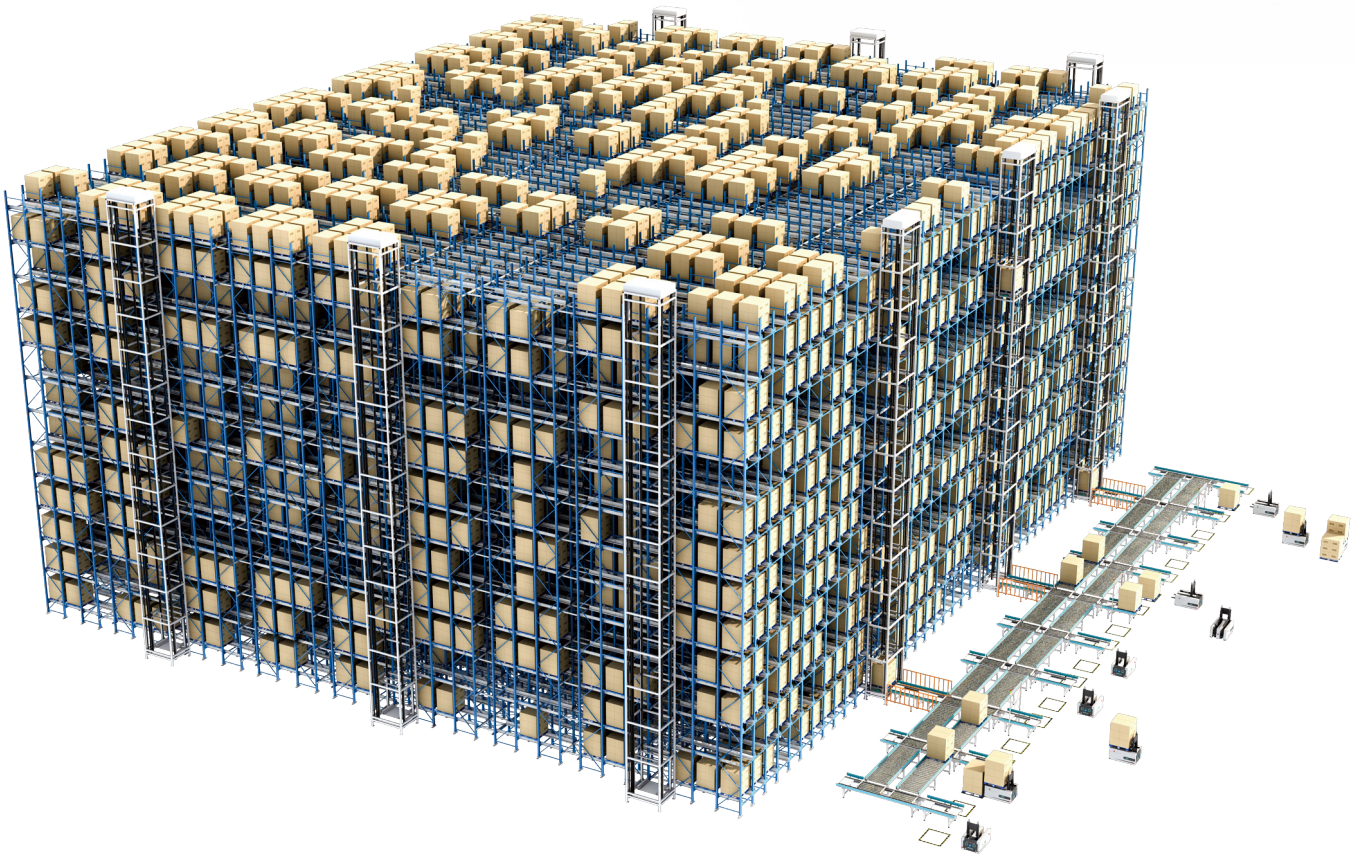


# Intelligent Four-way Shuttle

Density Storage Solution



# Intelligent four-way shuttle customizable solution

The intelligent four-way shuttle is a warehousing robotic equipment developed for the intensive storage of stereoscopic warehouse. It can operate in four directions automatically and has cluster scheduling and automatic charging functions. It is able to cooperate with other equipment such as elevators and conveyor lines. It can combine with RCS, WCS, WMS and other software systems to be used in a fully automatic stereoscopic warehouse, which is applicable in dense storage scenarios in industries such as food, medicine, automobiles, and new energy.

## Advantages of the product



### Precise and Efficient

Driving and Positioning Accuracy within  $\pm 2\text{mm}$   
Operational Speed reaches 2m/s

### Stable Operation, Flexible Movement

Four-way operation, Cargo in-situ horizontal reversal  
Suitable for a variety of complex scenes



### High Density Storage

Multi-depth Dense Storage  
3-4 Times More Storage Capacity than Usual

### Smart Dispatching

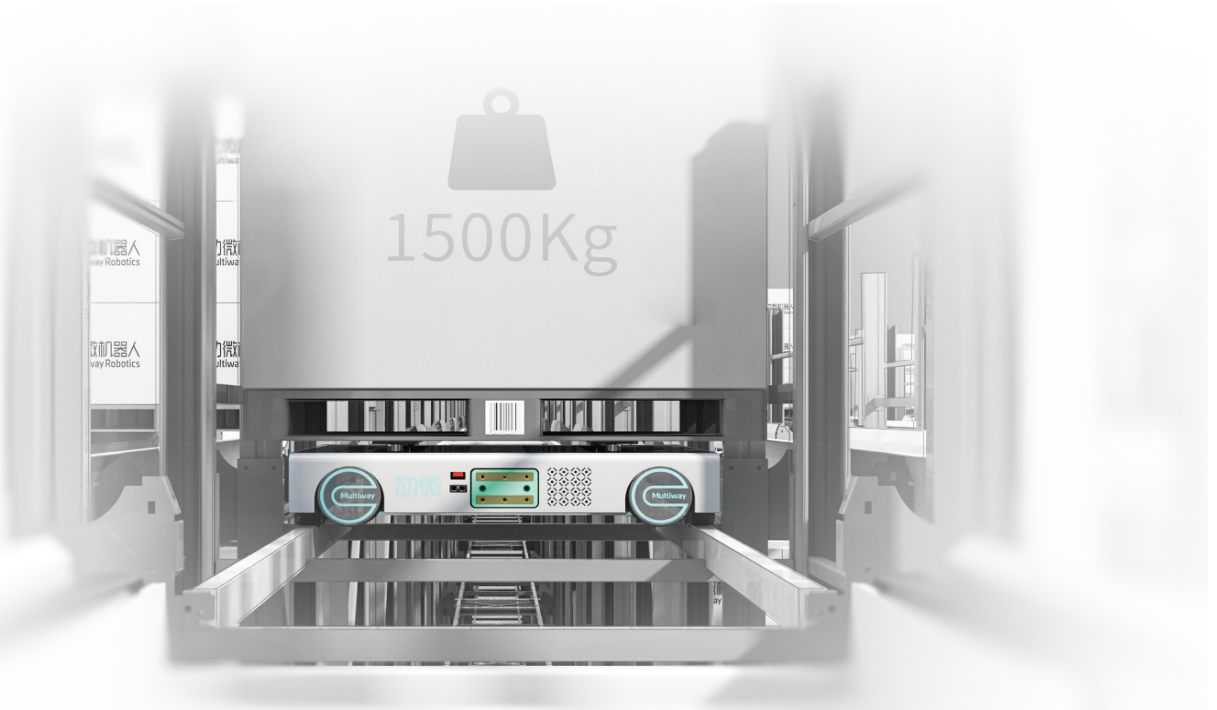
Cloud Dispatching, Path Optimization  
Real-time and efficient scheduling of multiple vehicles



### Visual Protection

Through real-time perception of the environment, detecting cargo over-loading, avoiding the risk of cargo overturning  
Detecting the falling of load, real-time video stream transmission terminal, manual judgment and processing in time, ensuring operation efficiency and safety





## Product Specifications

Basic Parameter	Model	Z15
	Dimensions	1300x980x136mm
	Rated Load	1500kg
	Pallet Width	1200-1300mm
	Pallet Height	1000-1300mm
	Jacking Height	42mm
	Weight	420kg
	Temp. Environment	-5 C ~45 C
Movement Specifications	Control Mode	Manual/Auto
	Driving Features	Four-way
	Jacking Method	Hydraulic Lifting (Mechanical Lifting)
	Drive Method	Hydraulic Drive (Servo Drive)
	Max Driving Speed	1.5m/s
	Positioning Accuracy	±2mm
	Jacking Time	4s
Battery Specifications	Motion Noise Level (>1m)	≤75dB
	Battery Type (Standard)	Lithium Iron Phosphate
	Standard Capacity	48V/40Ah
	Run time	6~8h
Safety Protection	Charging Mode	Auto/Manual
	Positioning Fault Protection	●
	Component Fault Protection	●
	Anti-Collision Detection	●

● Standard    The dimensions can be customized to satisfy project requirement



## System functions



Change Direction in Place



Multi-shuttle Scheduling



Intelligent Dynamic Management



Route Planning



Drop Detection



Overload Detection



Temperature Detection



Modular Configuration



Safety System



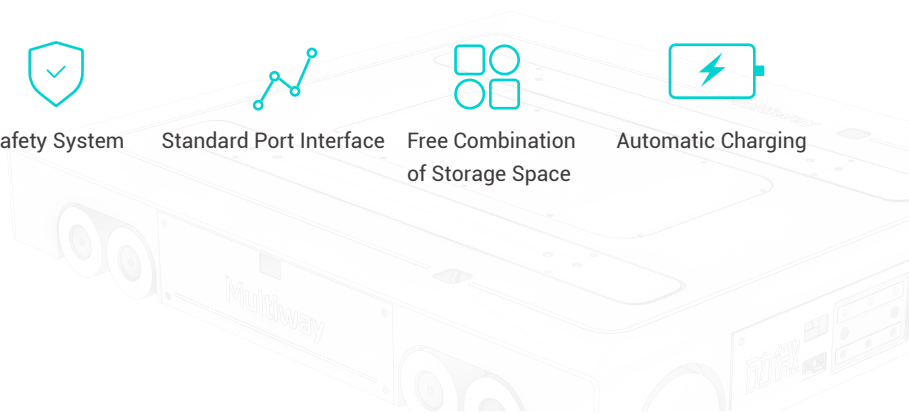
Standard Port Interface



Free Combination of Storage Space



Automatic Charging



# Multiway Robotics

---

Multiway Robotics is committed to "Empowering the World with Billions of Robots" and takes "To create a new and efficient operating mode" as its mission, continuously driving the advancement of global productivity.

Global Presence: The headquarters is located in Shenzhen, China, with production facilities in Zhejiang Wuzhen. Multiway has also established subsidiaries in the United States, Germany, Japan, South Korea, and more, extending business, operations, and services to 40+ countries and regions worldwide.

Our Expertise: Focusing on advanced robotics and AI technology, Multiway Robotics is committed to delivering cutting-edge Smart Intralogistics Solution to our customers. Multiway offers a comprehensive, integrated innovation delivery platform and solutions, ranging from core sensors and algorithms to self-developed unmanned forklifts and upper-level control systems. Hardware products include a full range of unmanned forklifts and four-way shuttle, while software systems encompass WMS, RCS, WCS, on-site management systems, and various visual solutions.

Software: WMS, RCS, WCS, Multiway Horizons, Simulation  
Hardware: AGV forklifts, AGV Tugger, AMR & Four-way Shuttle

After successfully delivering numerous benchmark projects in industries such as factories, warehousing, and logistics, Multiway has become a trusted and ongoing collaborative partner for many industry-leading customers.



## Contact Us

### Offices:

USA · Atlanta | Japan · Tokyo | Korea · Seoul  
Germany · North Rhine-Westphalia  
China · Shenzhen

Hotline: + 86 400-8765-081

Official website: [www.mw-r.com](http://www.mw-r.com)

Email: [sales@mw-robot.com](mailto:sales@mw-robot.com)

Subscribe to get the latest Multiway Robotics news