



Multiway Horizons

Empowering Smart Manufacturing
with AI-Enabled Flexible Robots

www.mw-r.com

Multiway Horizons

We leverage machine vision and AI technologies to develop adaptable solutions that drive smart manufacturing and intelligent logistics. Through vehicle-road collaboration, vehicle-factory collaboration, and comprehensive monitoring of business dynamics, we enable visualized management and ensure a secure operational environment facilitated by an edge computing data processing platform. This guarantees the stable operation of the factory, cost reduction, and improved efficiency.



Three Key Functions

**Empower Robots
Enhance Solution
Flexibility**



**Deep Integration of
Business Scenarios**

Shorten delivery cycles and
increase profitability

**Create a Safer and More
Efficient Smart Factory
Environment**



**Ensure Safe and
Efficient Operations**

Manageable operations and
traceable information

**Reduce Costs and Enhance
Accelerate Smart
Manufacturing and Empower
Enterprise Operations and
Management**







**Assist in Management
Decision-Making**


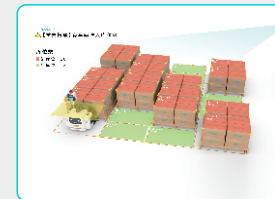
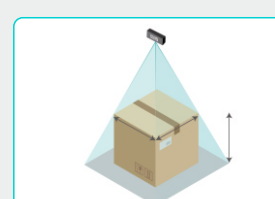
Agile design of information
technology infrastructure

Function Module



Flexible Empowerment

			
<p>Cage Stacking</p> <ul style="list-style-type: none"> ● Cage deformation detection ● Stacking safety inspection ● Cargo offset detection ● Disassembly and stacking at different heights 	<p>Automated Loading and Unloading for Vehicles</p> <ul style="list-style-type: none"> ● Compatible with multiple vehicle types (wing body, flatbed, van) ● Location planning for different cargoes (optimized space utilization) 	<p>Automated Loading and Unloading for Vehicles</p> <ul style="list-style-type: none"> ● High-precision cargo picking and placing ● Cargo unloading space detection 	<p>Pallet Posture Recognition</p> <ul style="list-style-type: none"> ● Support pallet deviation of up to $\pm 45^\circ$ and ± 80 cm ● Compatible with various types of pallets, cages, etc. ● Non-stop pallet pose identification by visual perception ● Support fast online training for non-standard vehicles ● Support side placed, front picking;

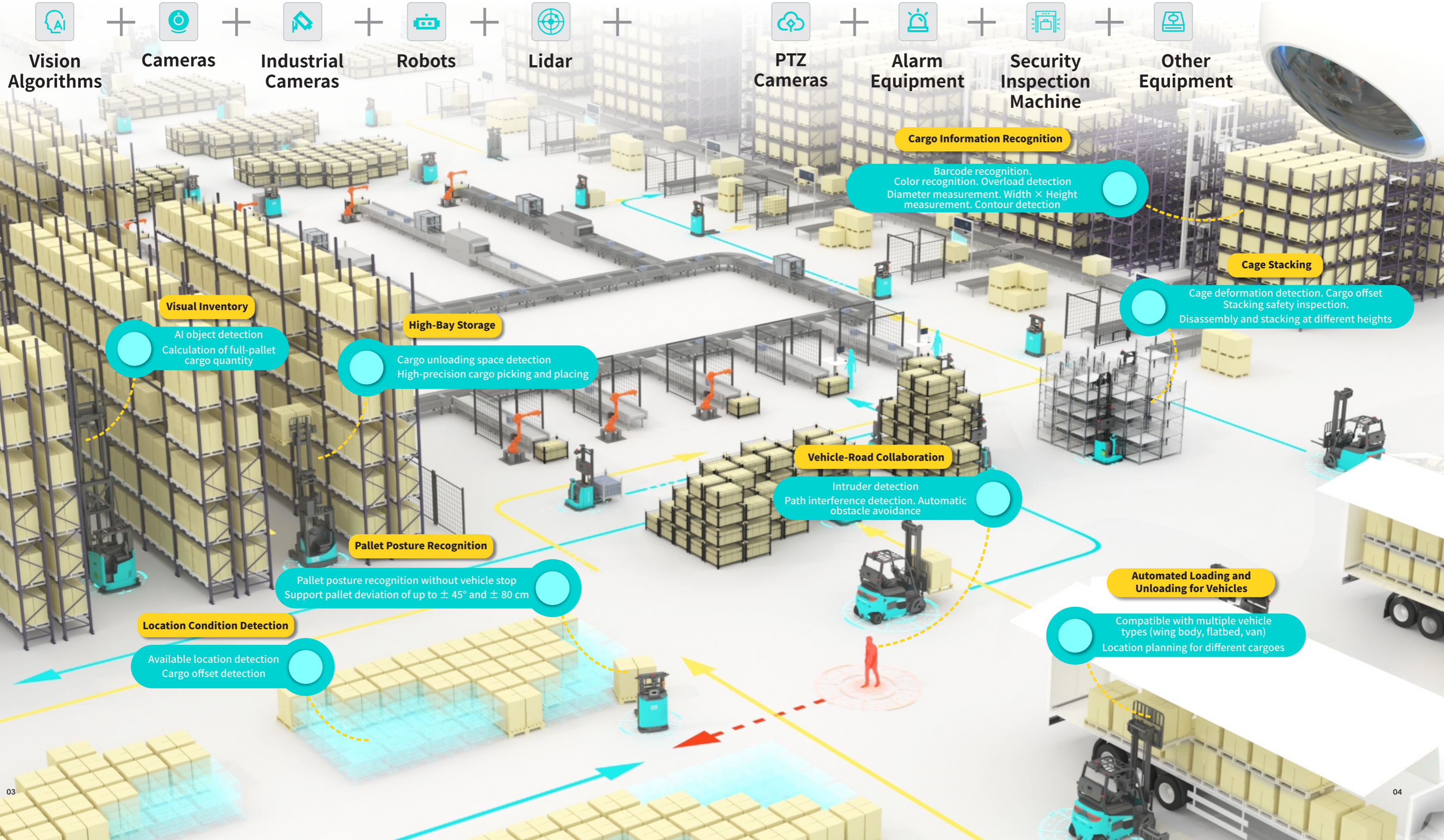
Operation and Management

	<p>Visual Inventory</p> <ul style="list-style-type: none"> ● Inspection of images for full-pallet cargo ● Calculation of full-pallet cargo quantity 		<p>Storage Location Detection</p> <ul style="list-style-type: none"> ● Available location detection ● Offset detection
	<p>Cargo Information Recognition</p> <ul style="list-style-type: none"> ● Barcode recognition ● Chinese character recognition ● Overload detection ● Diameter measurement ● Color recognition ● Quantity calculation ● Contour detection ● dth × Height measurement 		

Safety Monitoring

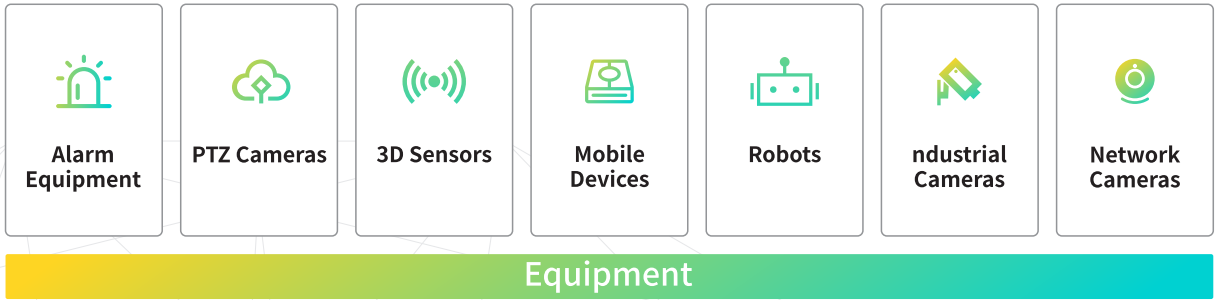
	<p>Vehicle-Road Collaboration</p> <ul style="list-style-type: none"> ● Intruder detection ● Foreign object detection on tracks ● Path interference detection 		<p>Environmental Safety Detection</p> <ul style="list-style-type: none"> ● Open flame and smoke detection ● Calculation of full-pallet cargo quantity
	<p>Worksite Safety Inspection</p> <ul style="list-style-type: none"> ● Face recognition ● Off-duty detection ● Fall detection ● Uniform detection ● Helmet detection ● Glove detection ● Abnormal behavior detection ● Cargo overturning detection 		

Flexible Vision Solution—Horizons System



Constituent Elements

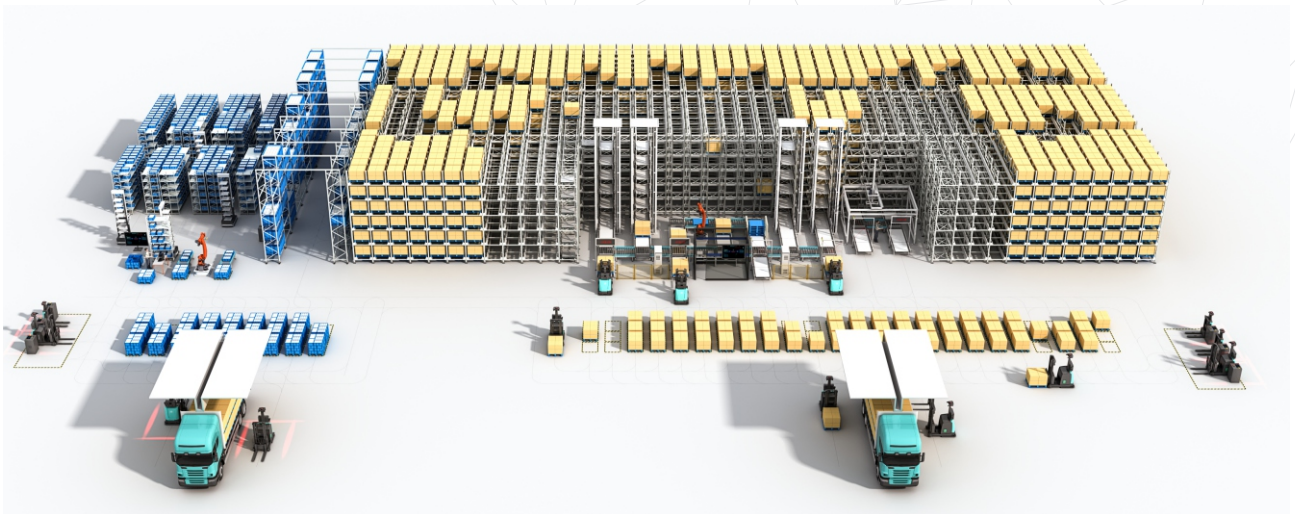
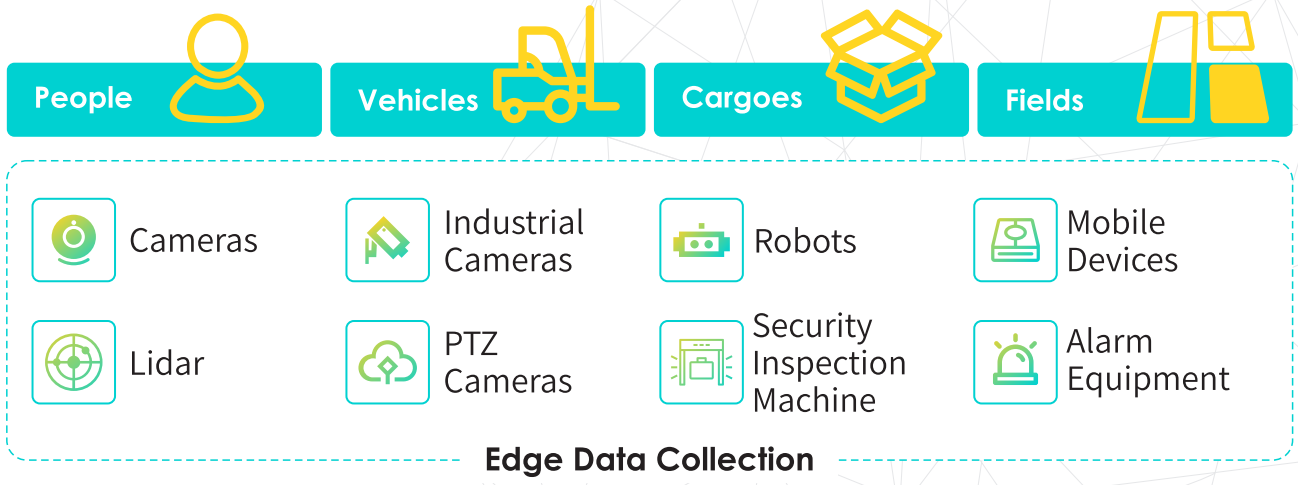
Hardware Equipment



Analysis of Applications



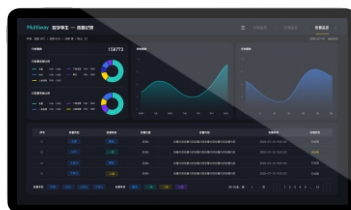
Smart Factory Application



Real-time AI Computing with Cloud Data Integrated
 Providing a Traceable Cloud Platform

Data Visualization Platform
 Intuitive and Intelligent Management Decision-Making

Flexible Configuration and Management of Edge Device Services in the Cloud
 Make the Devices Manageable



Real-time Computing Platform



Visualized Analysis Platform



O&M Management Platform

Multiway Robotics

Multiway Robotics, a leading intelligent intralogistics solution provider, with the mission of "Establish a new and efficient employment mode", is dedicated to drive continuous upgrades in social productive forces.

Global headquarter and laboratory are located in Shenzhen, China, with production facilities in Hefei. Multiway has also established subsidiaries in the United States, Germany, Japan, South Korea, and more, extending business, operations, and services to 30+ countries and regions worldwide.

Focusing on advanced robotics and AI technology, Multiway Robotics is committed to delivering cutting-edge intelligent manufacturing and smart logistics solutions to our customers. Multiway offers a comprehensive, integrated innovation delivery platform and solutions, ranging from core sensors and algorithms to self-developed unmanned forklifts and upper-level control systems. Hardware products include a full range of unmanned forklifts and four-way shuttle, while software systems encompass Multiway Cloud, WMS, RCS, WCS, on-site management systems, and various visual solutions.

After successfully delivering numerous benchmark projects in industries such as factories, warehousing, and logistics, Multiway has become a trusted and ongoing collaborative partner for many industry-leading customers.



Contact Us

Domestic Offices:

USA · Atlanta | Japan · Tokyo | Korea · Seoul
Germany · Düsseldorf | China · Shenzhen

whatsApp: +86 133 9286 4873

website: www.mw-r.com

Email: sales@mw-robot.com

Subscribe to get the latest Multiway Robotics news